

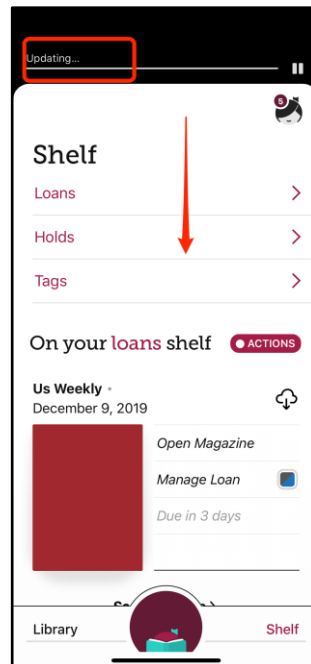


Notification Settings

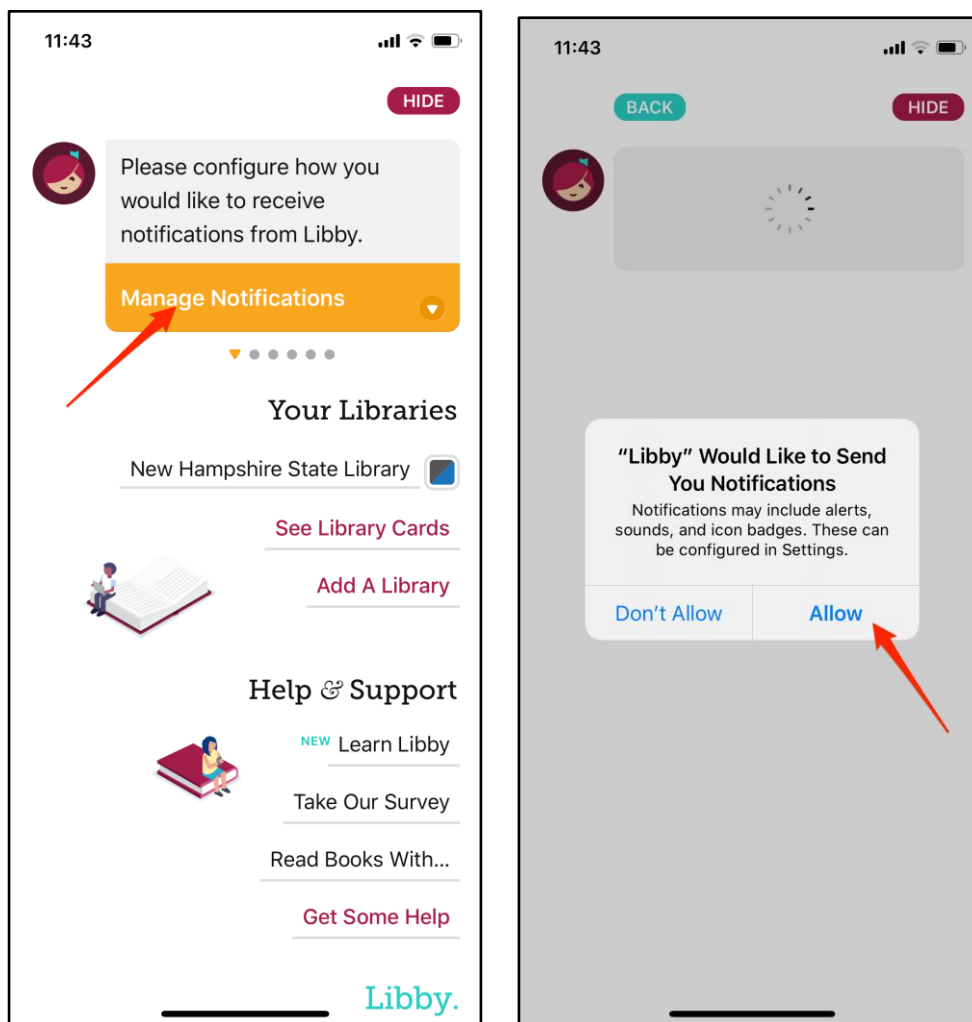
The Libby app can be configured to send notifications to your mobile devices even when the app is not in use. Notification include those for:

- Loan expiring
 - Appears a few days before your loan is due, so that you can renew it or place a hold. (Or finish reading it!)
- Loan expired
 - Appears when your loan has been returned automatically on the due date.
- Hold ready
 - Appears when a hold is read to borrow, or has been automatically borrowed.
- Hold lapsing
 - Warns you when your hold has been ready for several days, and you have not yet borrowed it.
- Hold lapsed
 - Appears when your hold is no longer available, because you didn't borrow it in time.
- Learn Libby
 - Appears when the Libby Academy has a new tutorial lesson for you.

If you do not see a message about hold notifications, a quick swipe downwards (in the iOS app) will refresh the app.



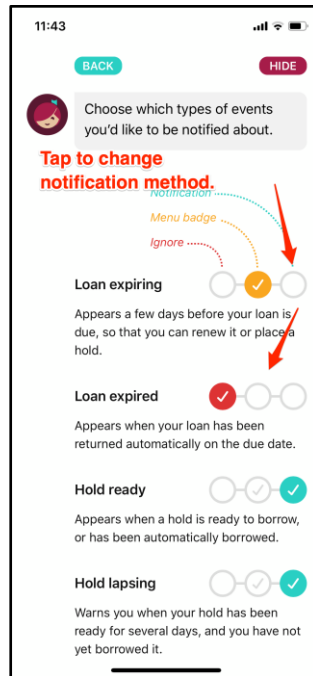
- Tap to manage your hold notifications and allow the Libby app to send notification to your device.



Select Your Desired Notification Methods

Only the **(green circles)** notifications will be sent to your device when the app is not in use. The **(orange circles)** menu badges appear as a colored circle on the menu icon. You will see them only when you open the Libby app.

- Tap one of the three circles to change the notification settings for each type.



Other Notes about Notification from the Vendor:

- Notifications are device-specific, so users can set their notification preferences for each device they use Libby on.
- After swiping a push notification, a user will be taken to their **Reading Journey** for that title, which displays any previous interactions and activity the user had with that book (notes, highlights, time read, etc.).
- Users on devices that don't support push notifications (or where they're disabled) can opt to receive notifications via email or in the Libby menu.
- Along with a new **Manage Notifications** section, we've refreshed and simplified the Libby menu.
 - *Librarian note: This will impact a librarian's ability to look up checked out or on hold titles by email address.*
- Going forward, email addresses for users that opt into Libby notifications will no longer be captured in Marketplace reports.
- As a follow-up to our earlier message, in early 2020, hold redelivery will replace auto-checkout, and Libby's notifications will be a helpful tool for guiding users through the new experience.